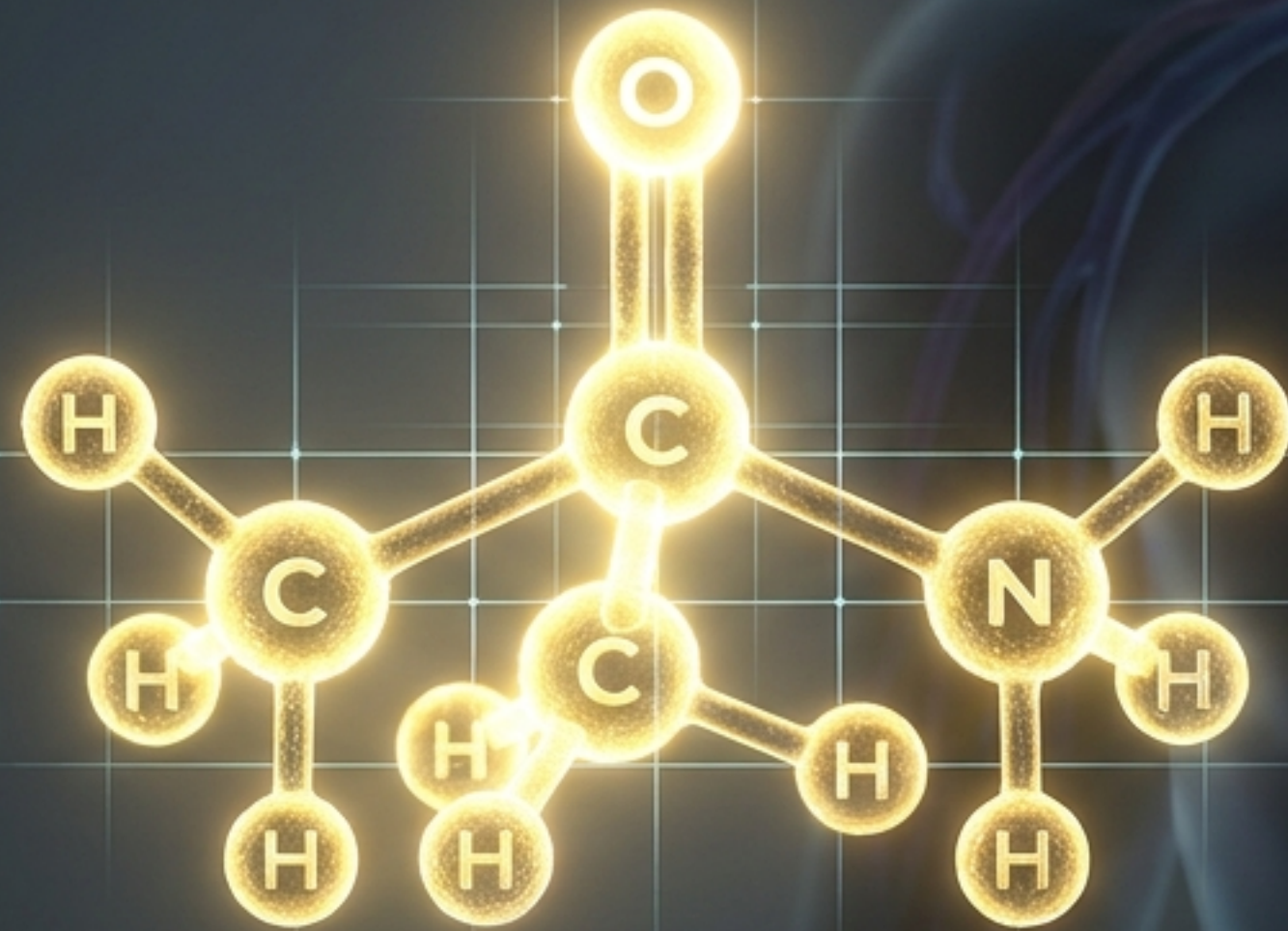


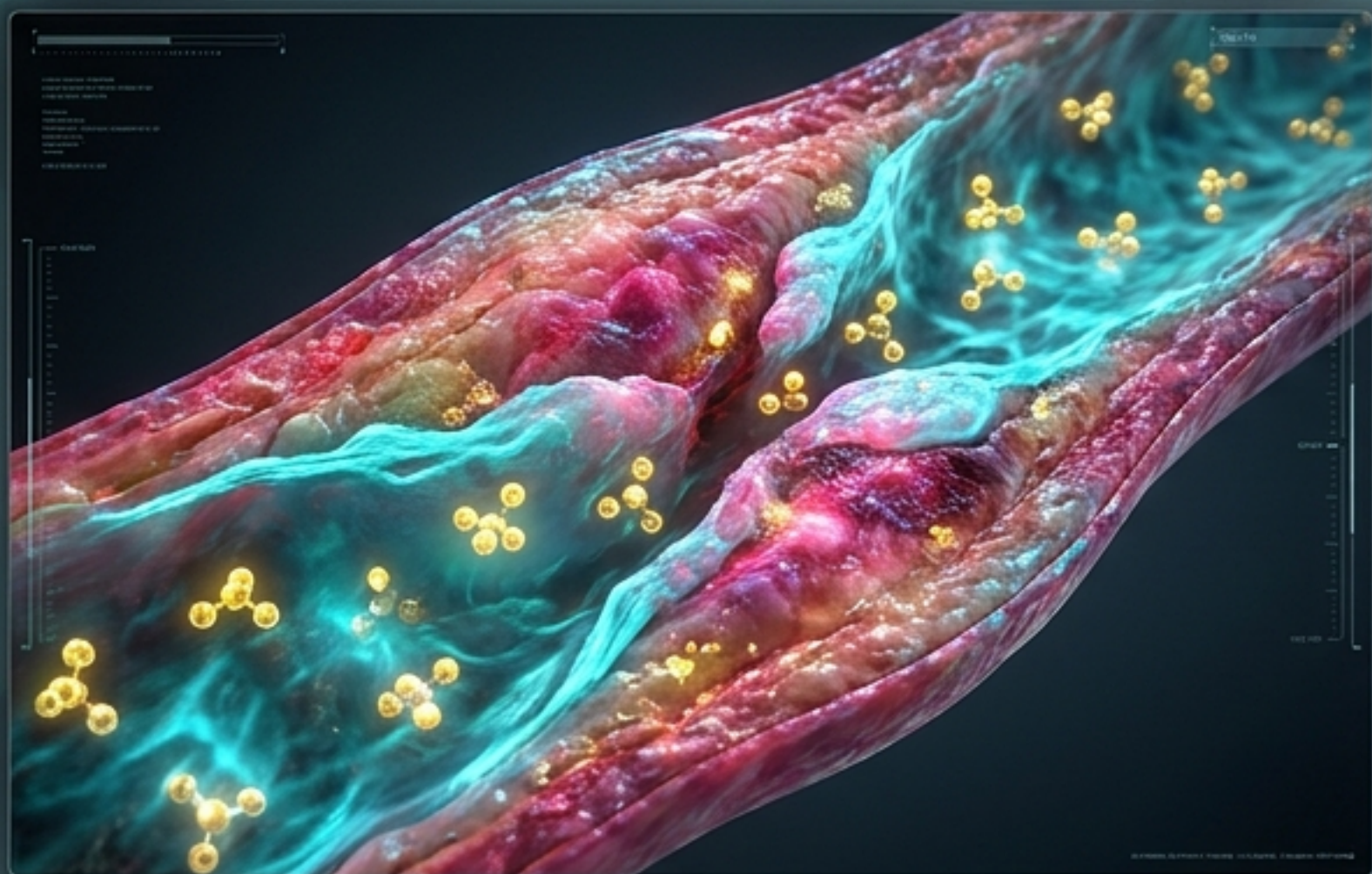
# THE TMAO VERDICT



A Comprehensive Appraisal of Causality Versus Biomarker Association in Cardiovascular Disease



## THE DIRECT TOXIN HYPOTHESIS



High TMAO is linked to 91% higher all-cause mortality and 67% higher risk of MACE

## THE PASSENGER HYPOTHESIS



Is TMAO simply a systemic reporter of renal decline, insulin resistance, and diet?

To uncover the truth, we must follow the molecule from the plate to the systemic circulation

# THE PRECURSOR LANDSCAPE

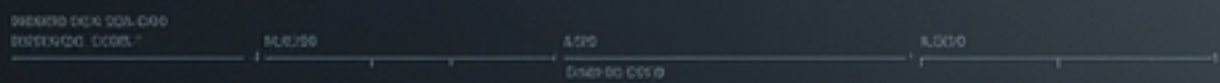
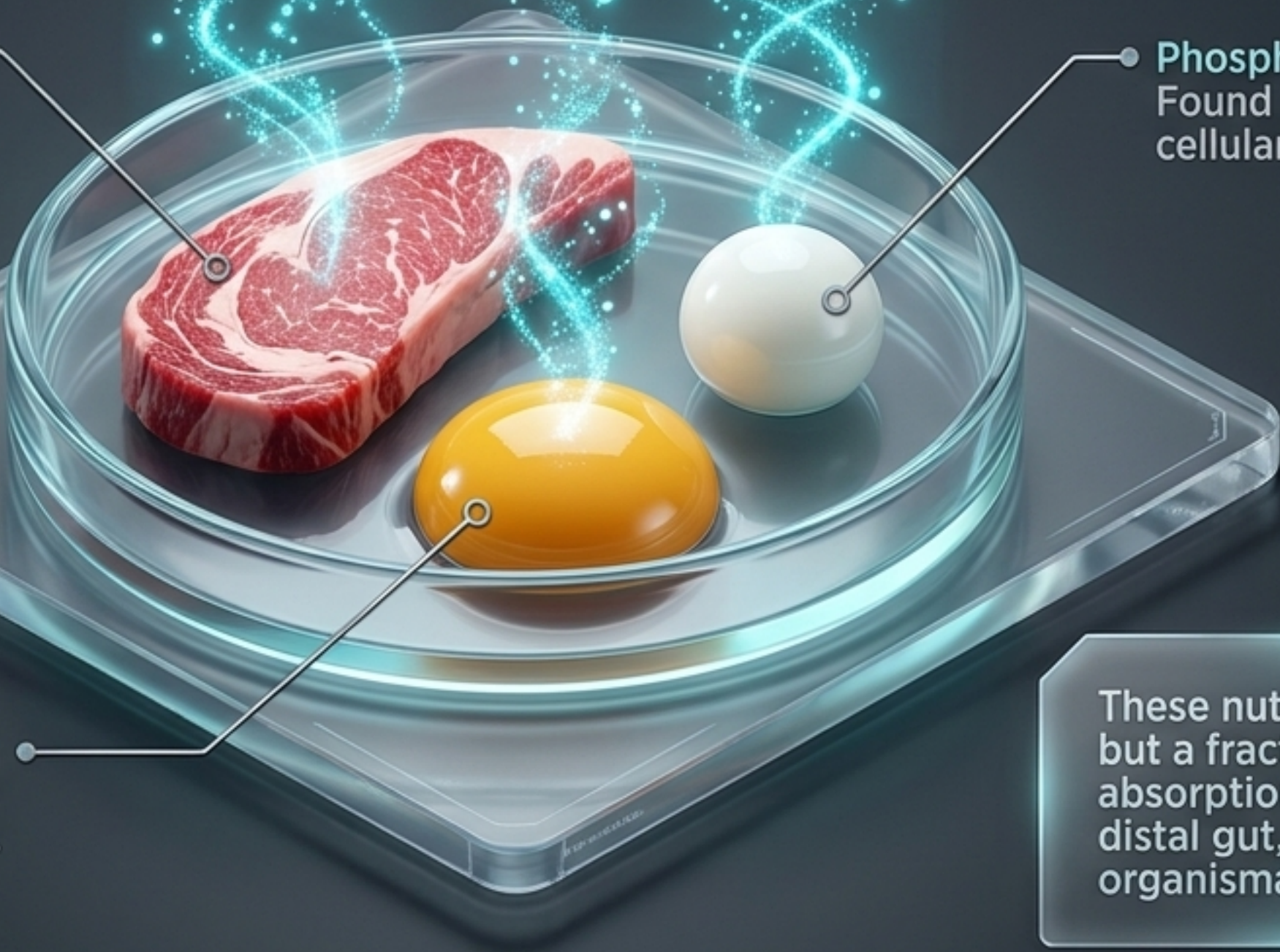
DATE: 2016-00-20  
PAGE: 00.00  
041047041  
00.00

**L-Carnitine:**  
Abundant in red meat.

**Phosphatidylcholine (Lecithin):**  
Found in full-fat dairy and cellular membranes.

**Choline:**  
Concentrated in egg yolks and poultry.

These nutrients are essential, but a fraction escapes proximal absorption and transits to the distal gut, initiating a multi-organismal metabolic cascade.





# HEPATIC OXIDATION: THE FMO3 HUB

DATE: 2019-08-25  
TIME: 20:00  
ESICART/01  
09/06

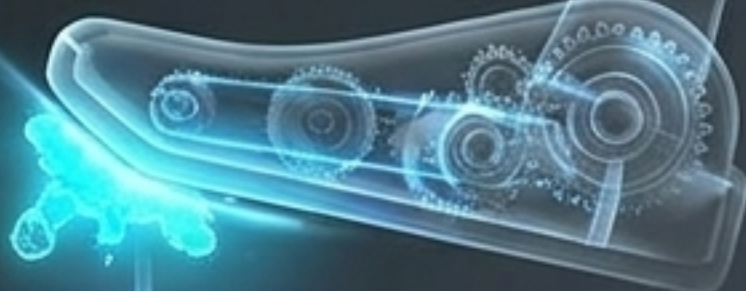


The flavin-containing monooxygenase 3 (FMO3) isoform is the most abundant and active in the adult human liver. It serves as a metabolic hub linking the gut microbiome, host lipid transport, and systemic energy homeostasis.

# THE FMO3 INSULIN BRAKE

INSULIN SENSITIVE

Insulin



Low & Contained TMAO Production

INSULIN RESISTANT

Insulin



Impaired via DAG/PKC-epsilon



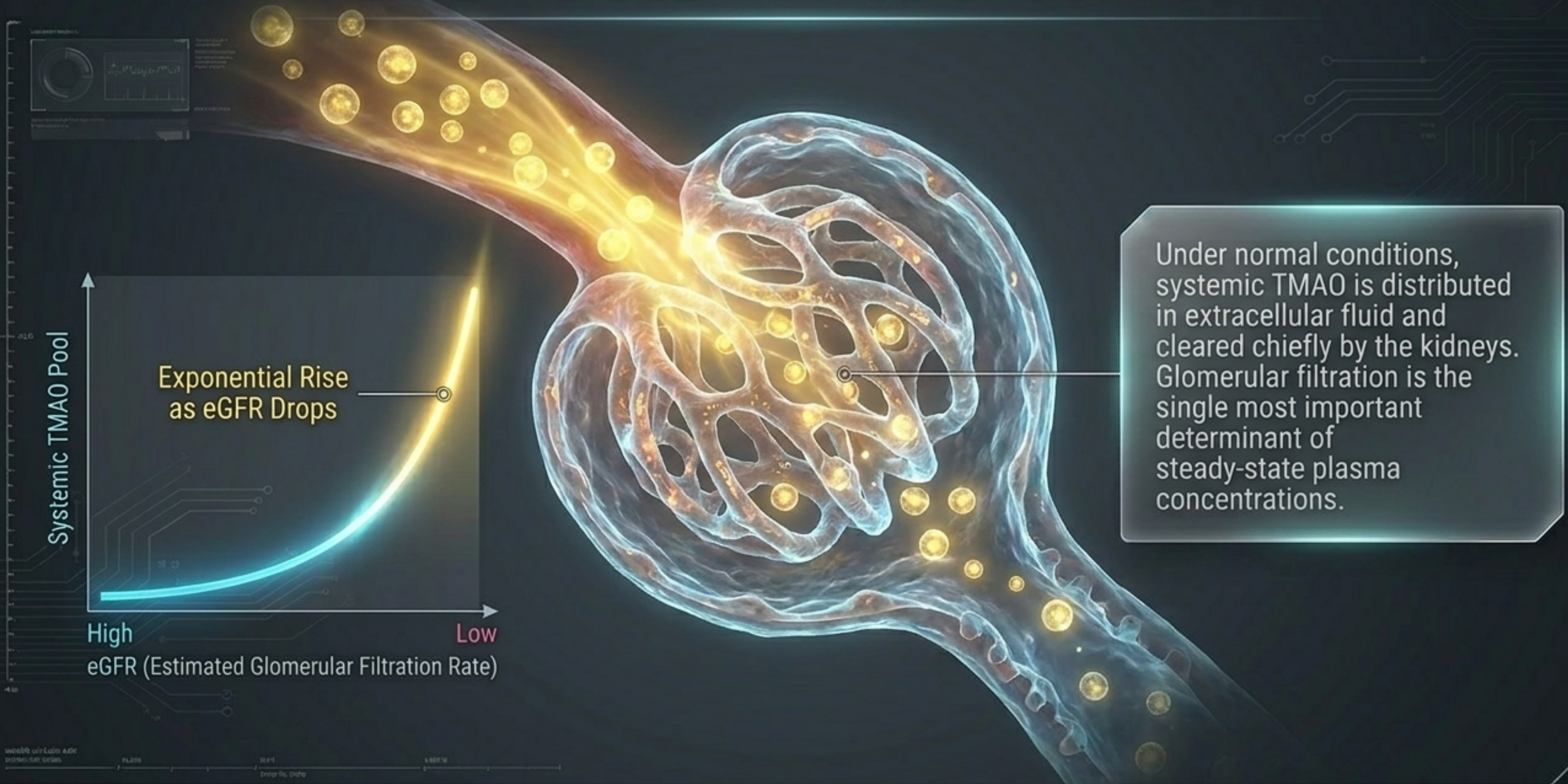
TMAO

High & Uninhibited TMAO Production

In selective hepatic insulin resistance (LIRKO mice), Fmo3 mRNA increases >1,000-fold, driving a 2.5-fold increase in plasma TMAO.

**Conclusion:** In subjects with preserved renal function, elevated plasma TMAO tracks hepatic insulin sensitivity.

# THE RENAL CLEARANCE CHECKPOINT



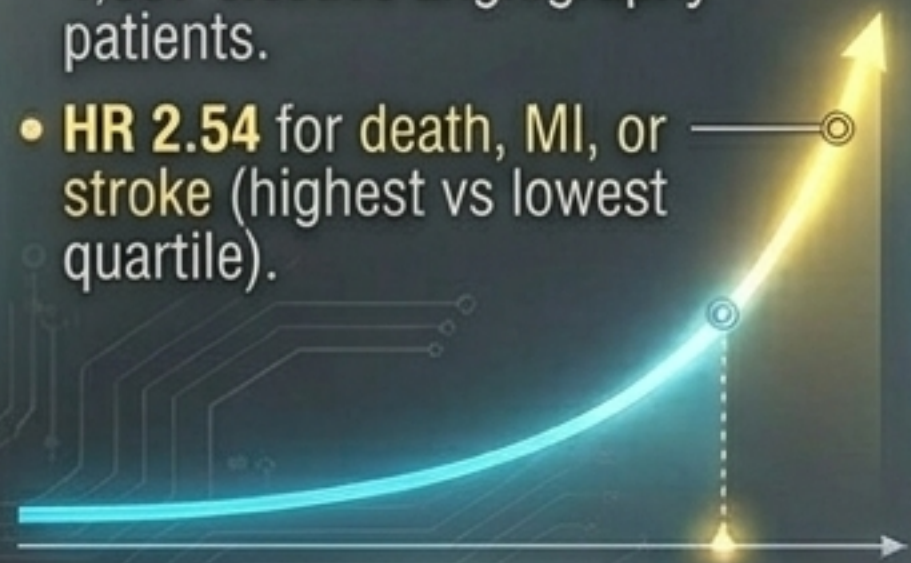
# THE OBSERVATIONAL INDICTMENT

TMAO



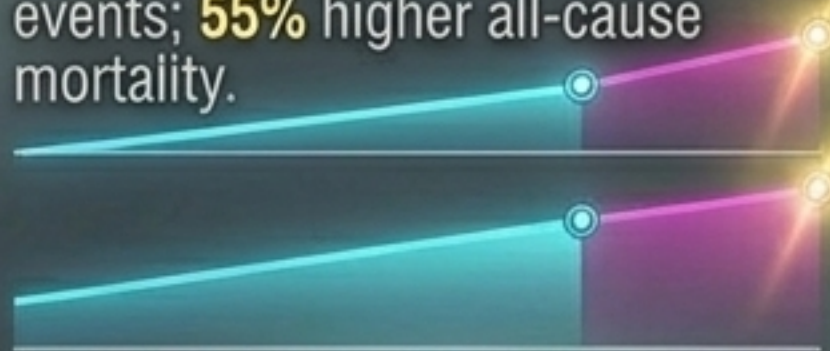
## Tang 2013 (NEJM)

- 4,007 elective angiography patients.
- **HR 2.54** for death, MI, or stroke (highest vs lowest quartile).



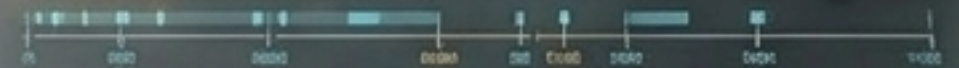
## Qi 2018 Meta-analysis

- 11 cohorts.
- **23%** higher risk of cardiovascular events; **55%** higher all-cause mortality.



## Schiattarella 2017 Meta-analysis

- 26,167 subjects.
- **91%** higher all-cause mortality. **7.6%** increase in mortality risk per 10 μmol/L increment.



In animal models, TMAO upregulates **scavenger receptors (CD36, SR-A)** and enhances **platelet activation**. The case for a causal toxin appears closed.

# THE GENETIC ALIBI

OBSERVATIONAL  
STUDIES



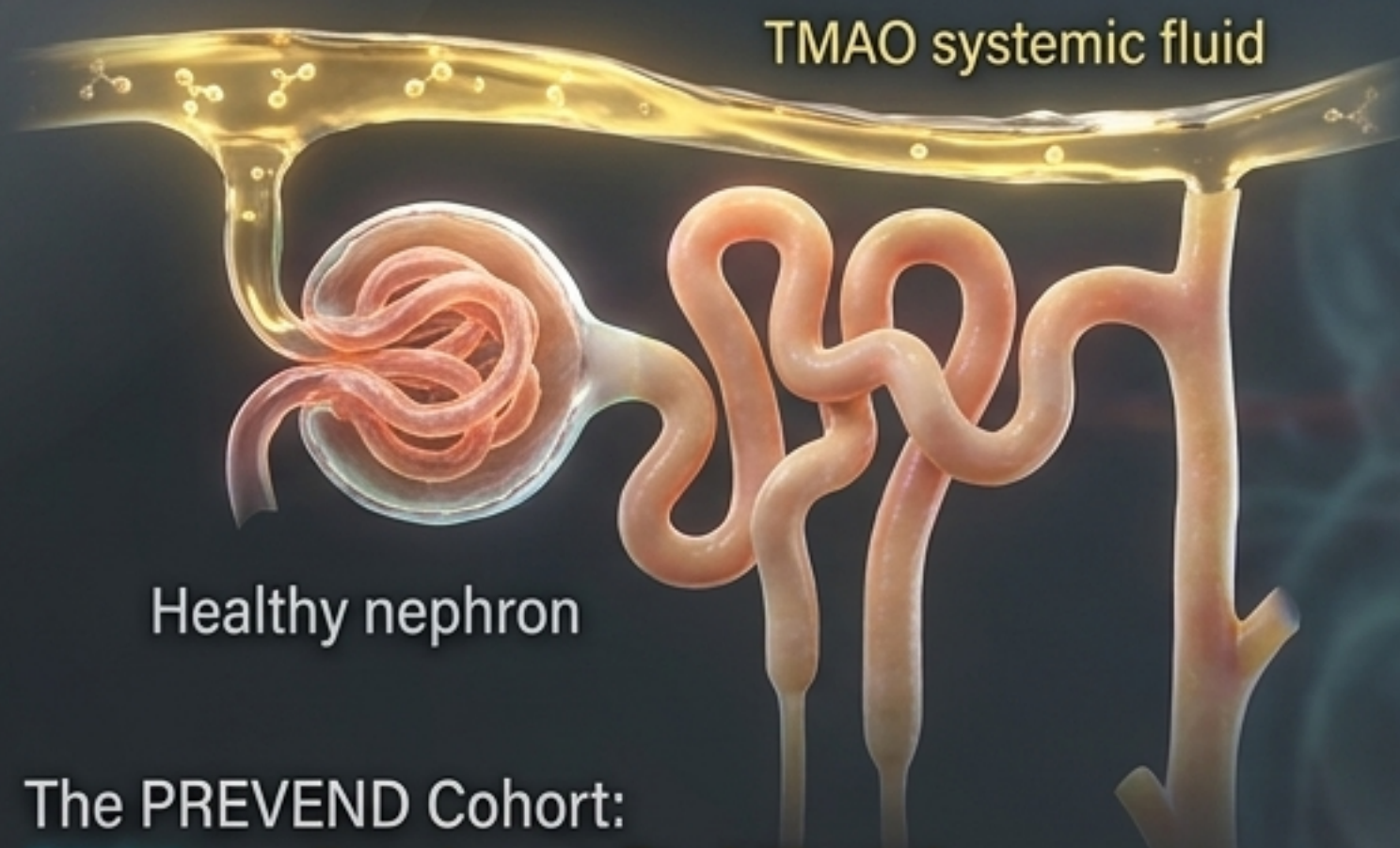
MENDELIAN RANDOMIZATION  
(LIFETIME EXPOSURE)

A massive bidirectional two-sample MR (DIAGRAM, CARDIoGRAMplusC4D, UK Biobank) found that genetically predicted higher TMAO and L-carnitine were not associated with CAD, MI, stroke, atrial fibrillation, or T2DM ( $P \leq 0.0005$ ).

**Reverse Causation Identified:** The genetic data revealed the opposite direction: genetic liability to Type 2 Diabetes ( $P < 0.0001$ ) and CKD ( $P = 0.004$ ) causes higher circulating TMAO.

# THE CONFOUNDING POWER OF RENAL FLUID DYNAMICS

## OPEN DRAIN



Healthy nephron

The PREVEND Cohort:  
**TMAO** predicted mortality (HR 1.36).  
But after adjustment for eGFR and albuminuria, the association was abolished (HR 1.15, non-significant).

## CLOGGED DRAIN



CKD nephron

The Type 1 Diabetes Cohort:  
**TMAO** predicted all endpoints. After baseline eGFR adjustment, **ALL** associations became non-significant. TMAO and eGFR were inversely related ( $R^2 = 0.29, P < 0.001$ ).

If the drain is clogged, the pool rises independently of diet or microbiome.  
Adjusting for kidney function frequently kills the TMAO prognostic signal.

# The Dual-Nature Interpretation



## Normal (eGFR $\geq 60$ , no albuminuria)

- **Typical TMAO:** Low, highly diet-responsive.
- **Prognostic Association:** Weak/absent after adjustment.
- **Best Interpretation:** Passenger marker of diet and microbiome.





## Mild–Moderate CKD

- **Typical TMAO:** Progressively elevated.
- **Prognostic Association:** Present, but deeply entangled with eGFR decline.
- **Best Interpretation:** Marker of clearance and disease severity.

## Advanced CKD / Dialysis

- **Typical TMAO:** Several-fold elevated (supraphysiological).
- **Prognostic Association:** Strong; tracks renal function tightly.
- **Best Interpretation:** Plausible active contributor to cardiorenal injury (NLRP3 inflammasome, TGF- $\beta$  fibrosis).

# Dietary Phenotypes and Metabolic Capacity

Dietary Phenotype	Fasting TMAO	Post-challenge kinetics	Microbiome
Vegans	Low	 (minimal TMAO/γBB generation)	Lacks cutC/cutD
Vegetarians	Fasting TMAO: Low-moderate	 (residual conversion retained)	High diversity, variable capacity
Omnivores	Fasting TMAO: Moderate	 (robust post-prandial rise)	Higher carriage of converting taxa
High Red Meat	Fasting TMAO: Elevated	 (enriched carnitine-utilizing pathway)	Enriched carnitine- utilizing pathway

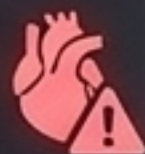
Suppressing microbiota with broad-spectrum antibiotics abolishes post-challenge TMAO in all groups, proving the obligatory microbial step.

# The Fish Consumption Paradox



**Data:** Post-meal TMAO reaches low triple digits.

**Clinical Reality:** Associated with higher CVD risk.



If circulating TMAO were a direct vascular toxin, **fish-rich diets should accelerate disease.**

**Instead, they are cardioprotective.**

This weighs heavily against TMAO acting as a primary vascular toxin at moderately elevated concentrations.



**Data:** Preformed TMAO acts as a marine osmolyte. Post-meal TMAO into the thousands of  $\mu\text{mol/L}$  (rapid spikes bypassing the microbiome).



**Clinical Reality:** Associated with reduced coronary heart disease, stroke, and all-cause mortality.

# Disentangling Red Meat Toxicity

Unprocessed red meat carries several bioactive components linked to vascular injury.

Component	Proposed Mechanism	Associated Biomarkers
Saturated Fatty Acids	Downregulate LDL receptors, raise ApoB	LDL-C, ApoB
Heme Iron	Catalyzes ROS via Fenton chemistry	Oxidized LDL, MDA
Sodium (Processed)	Endothelial shear stress, stiffness	Blood pressure
Advanced Glycation End-Products (AGEs)	RAGE engagement, NF- $\kappa$ B activation	hsCRP, IL-6
L-Carnitine/TMAO	Suppresses reverse cholesterol transport	TMAO, $\gamma$ BB

**Key Takeaway:** The proatherogenic potential of red meat is driven by the broader dietary matrix, not TMAO generation in isolation. Incorporating lean beef into a fiber-rich Mediterranean pattern actually lowers TMAO.

# The Causal Verdict: Bradford Hill Appraisal

Strength

Biological Gradient

Plausibility

Experiment

Analogy

**Consistency** (High for association; Low across designs):

Highly reproducible in cohorts, but zero corroboration in Mendelian randomization.

↑↓ MIXED

**Specificity** (Unmet):

Elevated TMAO accompanies diabetes, NAFLD, obesity, and CKD. It is a general metabolic signal, not specific to vascular disease.

✗← UNSPECIFIC →

**Temporality** (Confounded):

TMAO precedes events, but bidirectional MR proves this is confounded by reverse causation (CKD/T2DM cause high TMAO).

↻ REVERSE CAUSATION ↻

**Coherence** (Partially Unmet):

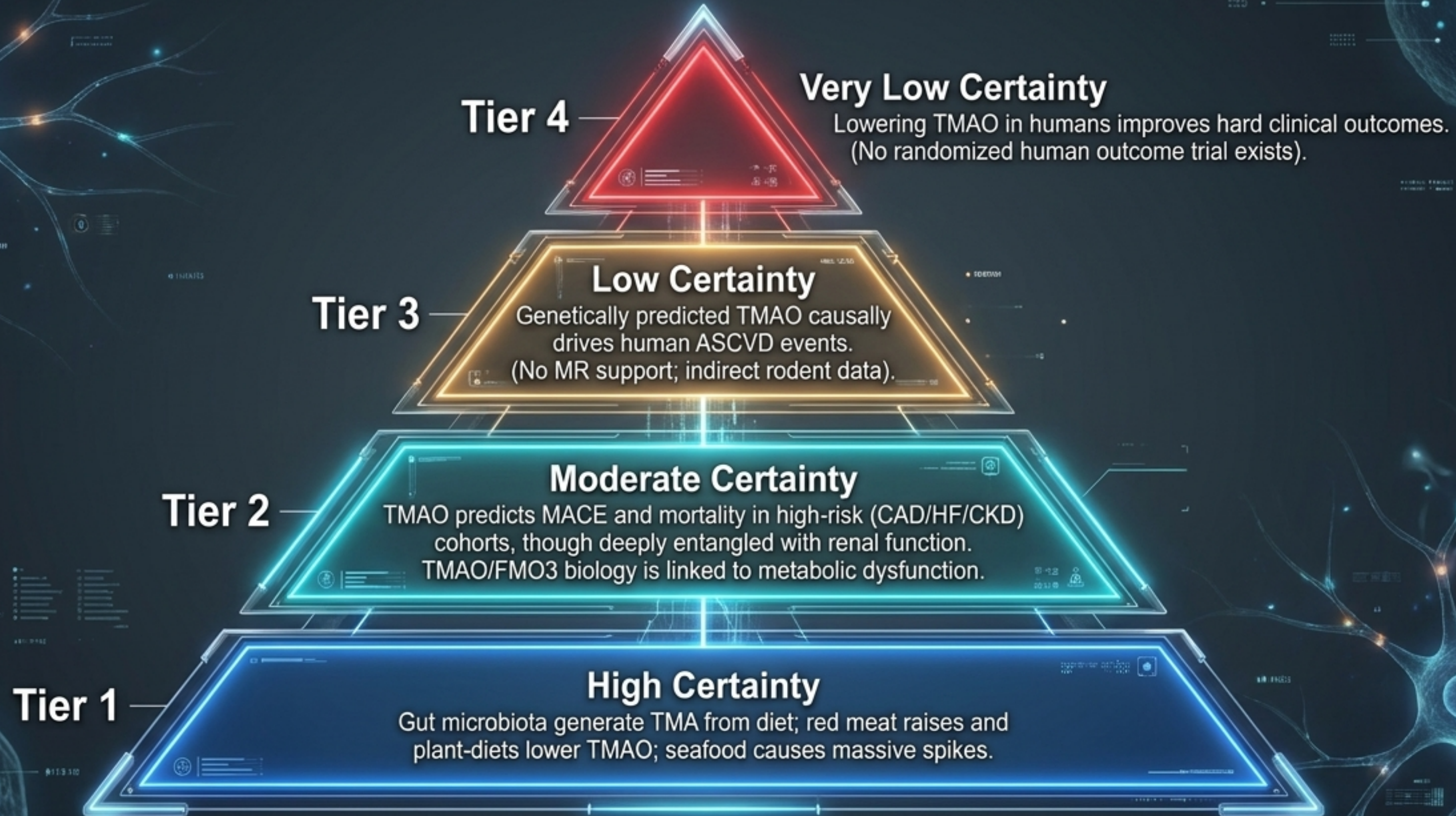
The fish paradox directly conflicts with a simple toxin model.

♥? CONFLICTING

⚖️ → CONCLUSION

The framework supports TMAO as a **robust risk marker**, but **falls short of establishing** it as a primary causal driver of human ASCVD.

# GRADE Certainty Tiers: Stratifying the Claims



# The Divergence in Expert Interpretation

## The Experimentalists



- Often led by groups generating foundational mechanistic data.
- **Focus:** Rodent atherosclerosis, platelet hyperreactivity, TMA-lyase inhibitor success in animals.
- **Interpretation:** TMAO is a modifiable causal contributor.



## The Experimentalists

## The Epidemiologists



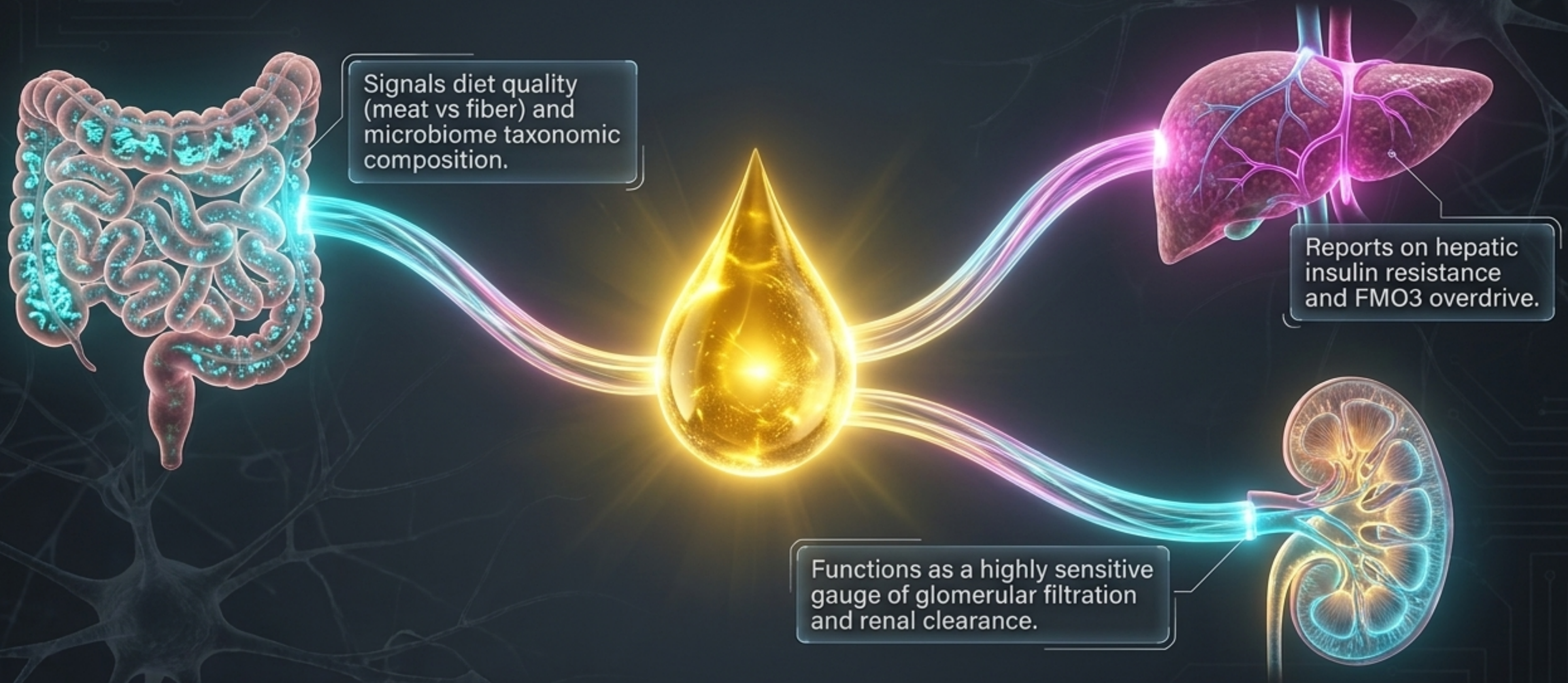
- Often led by cardiovascular and nutrition researchers.
- **Focus:** Null Mendelian randomization, dominant eGFR confounding, the Fish Paradox.
- **Interpretation:** TMAO is chiefly a marker of diet, microbiome, and kidney-heart crosstalk.



## The Epidemiologists

Both accept the prognostic value and the microbial pathway. The divergence rests on one empirical question:  
**Will selectively lowering circulating TMAO alter human events?**




# The Ultimate Systemic Check Engine Light






TMAO is not a simple toxin. It is a uniquely integrative metabolic reporter that synthesizes diet, hepatic health, and renal clearance into a single measurable biomarker.

# The Frontier: Unanswered Questions

## Limitations

-  Rodent models lack CETP and differ in bile-acid handling, limiting translation.
-  Mendelian randomization assumes lifelong effects but cannot exclude acute toxicities.
-  No human trial has tested TMAO reduction against hard cardiovascular endpoints.

## Future Directions

-  Do non-lethal TMA-lyase inhibitors reduce MACE in humans, and are they safe?
-  Is there a defined toxic threshold where TMAO transitions from marker to pathogen in advanced CKD?
-  Do common FMO3 genetic variants alter human cardiovascular risk?

**Until trials prove otherwise, clinical focus should remain on the fundamental drivers: diet quality, insulin sensitivity, and renal health.**